

# CONTAINER DOLLY

---



## MODEL A04230D

---

### FEATURES:

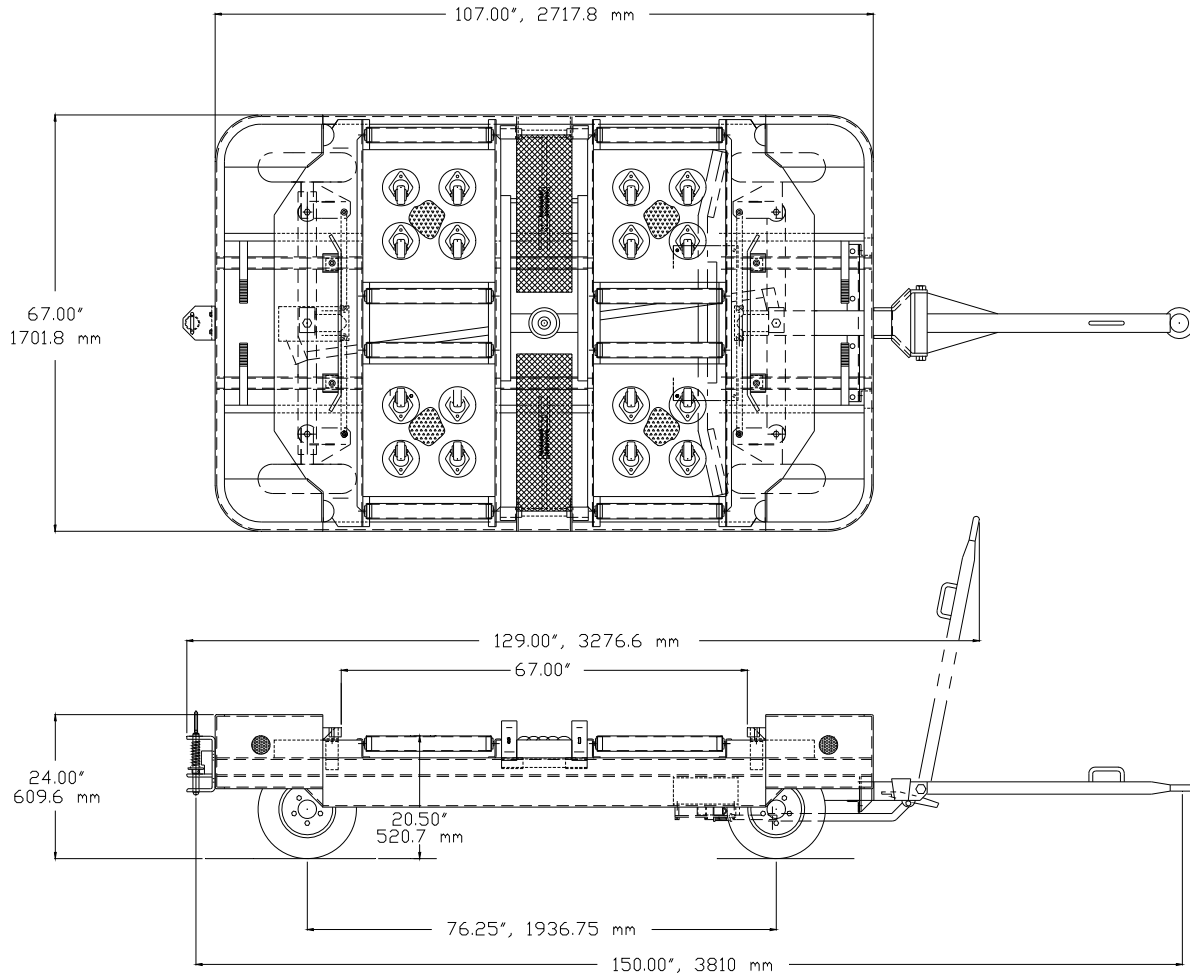
- Roller / Caster Bed and Center Pivot Allows Container Rotation
- 3,500 lb. (1587.57 kg) Cargo Capacity
- 20-25 MPH Towing Speed
- Heavy Duty 1/4" Steel Plate Perimeter Frame
- All Sealed Bearings
- Towbar Actuated Front Wheel Parking Brakes
- Manual Overcenter Container Locks for Vertical and Horizontal Restraint
- Single or Double Ackerman Steering
- Main Frame Corners Radiused to Minimize Collision Damage
- Epoxy Powdercoated per Customer Color
- Hot Dip Galvanizing Optional

***“FIRST CLASS DOESN'T HAVE TO COST MORE”***

---

WASP, Inc.  
Box 249 ■ Glenwood, MN 56334  
(320) 634-5885 FAX (320) 634-5881

# Container Dolly



## SPECIFICATIONS:

**WEIGHT:** 1300 lbs. (589.67 kg)

**TIRES:** 4.00 x 8 x 16" OD – Solid Rubber.

**HUBS:** 1-3/8" Dia., with sealed Timken bearings.

**REFLECTORS:** 8 Reflectors; Amber on Front, Red on Rear.

**REAR HITCH:** Spring-Loaded E-Hitch, Standard. Other Types Optional.

**WHEEL SPINDLES:** 1-3/4" Dia.

**PALLET STOPS:** Manual, Spring-Loaded Overcenter.

**RIMS:** 9 GA., 5-bolt, 4-1/2" BC, 2 piece Demountable.

**TIE ROD ENDS:** 3/4" Automotive Type.

**BED ROLLERS:** 8 - 2-1/2" Dia., 11 GA., with sealed bearings and 11/16" hex shaft.

**BED CASTERS:** 16 – 3" Wheel, 3-23/32" high.